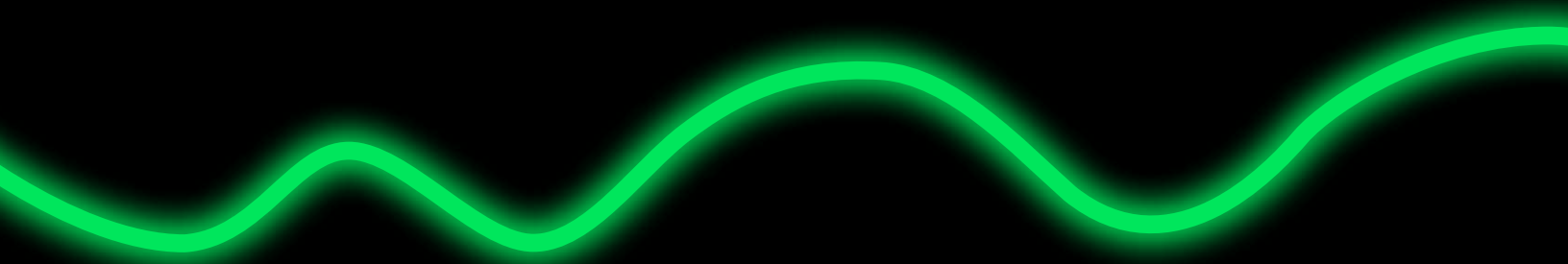




CHARGING FORWARD >

2023 ANNUAL REPORT

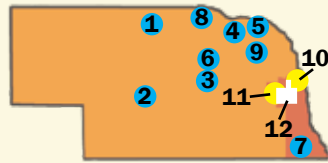
Your Energy Partner®
OPPD
Omaha Public Power District



OPPD SERVICE TERRITORY

- Served at Retail
 - ▲ Served at Wholesale
 - ⊞ Power Station*
 - Wind Generation
 - Solar Generation
 - ★ OPPD Headquarters
- * 2023 rated capability

Renewables



WIND ENERGY CENTERS

- 1. Ainsworth**
10-megawatt participation agreement
- 2. Broken Bow I**
18-megawatt participation agreement
- Broken Bow II**
43.9-megawatt participation agreement
- 3. Petersburg**
40.5-megawatt participation agreement
- 4. Elkhorn Ridge**
25-megawatt participation agreement
- 5. Crofton Bluffs**
13.6-megawatt participation agreement
- 6. Prairie Breeze**
200.6-megawatt participation agreement
- 7. Flat Water**
60-megawatt participation agreement
- 8. Grande Prairie**
400-megawatt participation agreement
- 9. Sholes**
160-megawatt participation agreement

SOLAR

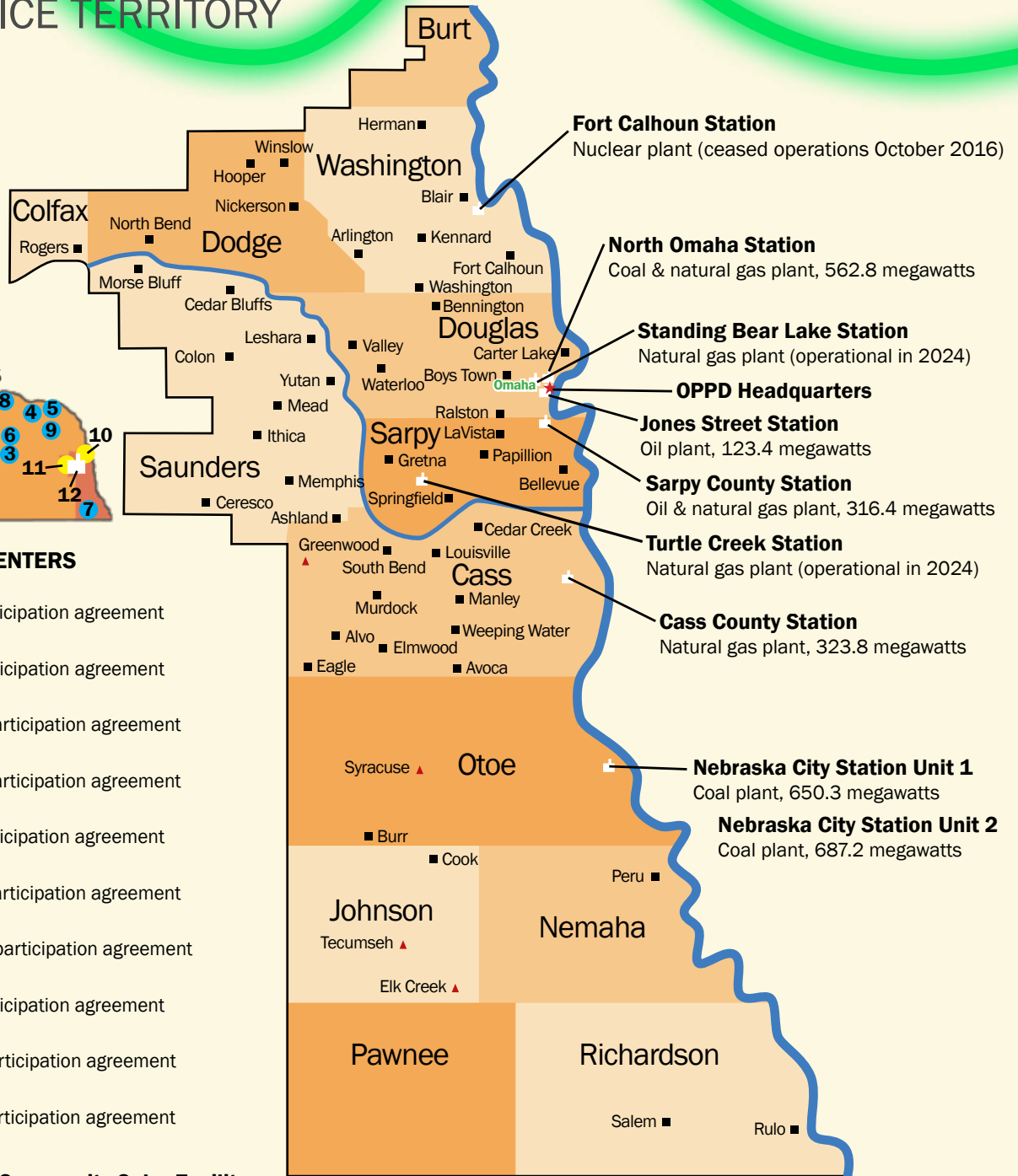
- 10. Fort Calhoun Community Solar Facility**
5 megawatts
- 11. Platteview Solar Facility**
81 megawatts (operational in 2024)

LANDFILL GAS

- 12. Elk City Station**
6 megawatts

HYDRO

- From Western Area Power Administration**
81.3 megawatts



ABOUT OPPD

Omaha Public Power District is a publicly owned electric utility that serves an estimated population of 885,000 people, more than any other electric utility in the state. Operating since 1946, the public utility is governed by an elected board of eight directors. While its headquarters is located in Omaha, Nebraska, OPPD has several other locations in its 13-county, 5,000-square-mile service area in southeast Nebraska.

OPPD uses baseload power facilities fueled by coal and natural gas, balancing stations fueled by natural gas and oil, and renewable energy, including wind, solar, landfill gas and hydro power.

ON THE COVER: Welding specialist Cody Kenealy works on an expanding substation as part of OPPD's Power with Purpose initiative.



Les Barrett, working crew leader – material handling at Nebraska City Station.

Employees and contractors service a turbine and generator at Nebraska City Station during a planned outage.



TABLE OF CONTENTS

- Board Chair and CEO Message**.....2
- Board of Directors**3
- Executive Leadership Team**.....3
- Operations Review**4
- Report of Management** 10
- Independent Auditor’s Report** 12
- Management’s Discussion and Analysis (Unaudited)**..... 14
- Statements of Net Position**.....28
- Statements of Revenues, Expenses and Changes in Net Position**..... 30
- Statements of Cash Flows** 31
- Statements of Fiduciary Net Position**..... 34
- Statements of Changes in Fiduciary Net Position** 35
- Notes to Financial Statements**..... 36
- Required Supplementary Information (Unaudited)** 76
- Notes to Required Supplementary Information (Unaudited)** 86
- Statistics (Unaudited)** 88
- Investor Relations and Corporate Information** Inside back cover



Tim Stambaugh, apprentice streetlight worker, replaces burned out sodium vapor bulbs with new energy-efficient LED bulbs.

BOARD CHAIR AND CEO MESSAGE



President and CEO
L. Javier Fernandez



Board Chair
Eric H. Williams

Every year at OPPD, we look for new and innovative ways to serve our community and deliver reliable, affordable, environmentally sensitive power, and 2023 was no different.

As our service territory flourishes with new homes, schools and businesses, we worked proactively to meet our customers' immediate and long-term needs. Reliability is paramount, as always, and a well-diversified energy portfolio helps us achieve that goal.

Last year, OPPD's board approved a major expansion of new generation, including 1,000 to 1,500 megawatts of renewable energy, to meet unprecedented new demand for electricity expected over the next decade. The plan includes a diverse mix of generation, including battery storage, thermal power, demand response and upgrades to our current facilities.

We made great progress in the development of our Standing Bear Lake Station and Turtle Creek Station, which are expected to go online in 2024 with a total of 600 megawatts of natural gas generation.

Another project, Platteview Solar in Saunders County, will provide an additional 81 megawatts of renewable energy starting in 2024. We acquired the rights to an existing solar project, K-Junction Solar in York County, and are currently exploring the possible development of a 310-megawatt, 3,000-acre solar array.

In Douglas County, we're studying a potential landfill solar project – the first of its kind in Nebraska – that could give a new, productive life to a shuttered landfill.

We also volunteered in our communities, urban and rural: cleaning neighborhoods, packing food at local pantries, even raising money to help customers who struggle to pay their utility bills. With career fairs and events geared toward local high school students, we highlighted the many rewarding, good-paying jobs available at utilities and encouraged young people to consider STEM and trade careers.

Many of our hardworking line technicians went beyond their normal duties to help other communities in need. In August, crews traveled to Florida for nine days to restore power to residents in the wake of Hurricane Idalia. Those mutual aid relationships benefit us, as well. When major storms roll through our service territory, we know we can count on our partner utilities to assist us in restoring power as quickly as possible.

We also laid more groundwork for a sustainable, innovative future with new progress on our Powering the Future to 2050 strategic vision. Powering the Future to 2050 makes prioritizing and decision-making easier, ensuring that we're doing the right work at the right time.

We are now moving ahead with a new step, Charging Forward. Charging Forward is about taking that vision and plan and acting on it. We are making decisions, creating timelines, executing with project teams.

Looking back at the year is a good way to remind ourselves of everything we achieved, but our vision for the future is just as clear. Many exciting changes are coming, and our commitment to serve all customers in our territory – urban and rural – is stronger than ever. As your neighbors, your friends, your family, everyone at OPPD continues to charge forward to a brighter future.

A handwritten signature in black ink, appearing to read 'L. Fernandez'.

L. Javier Fernandez
President and CEO

A handwritten signature in black ink, appearing to read 'E. Williams'.

Eric H. Williams
Chair of the Board

BOARD OF DIRECTORS



Eric H. Williams
Chair of the Board
Natural Resources
Planner



Janece M. Mollhoff
Vice Chair of the Board
U.S. Army Nurse Corps
Colonel (retired)



Craig C. Moody
Secretary
Business Owner



Mary G. Spurgeon
Treasurer
Educator
(retired)



Amanda E. Bogner, P.E.
Board Member
Business Owner



Michael J. Cavanaugh
Board Member
Omaha Police Lieutenant
(retired)
Security Contractor



Matt R. Core
Board Member
Lieutenant, Sarpy County
Sheriff's office



Sara E. Howard
Board Member
Policy Advisor

EXECUTIVE LEADERSHIP TEAM



L. Javier Fernandez
President &
Chief Executive
Officer



Jeff M. Bishop
Vice President &
Chief Financial
Officer
Assistant Secretary



Kate W. Brown
Vice President &
Chief Information
Officer
Assistant Secretary



Cliff V. Fleener
Vice President –
Sustainability &
Environmental
Affairs
Assistant Secretary



Scott M. Focht
Vice President –
Corporate Strategy
& Governance
Assistant Secretary



Tim D. McAreavey
Vice President –
Customer Service
Assistant Secretary



Kevin S. McCormick
Vice President –
Safety & Facilities
Assistant Secretary



Lisa A. Olson
Vice President –
Public Affairs
Assistant Secretary



McKell V. Purnell
Vice President –
Human Capital
Assistant Secretary



Bradley R. Underwood
Vice President –
Systems
Transformation
Assistant Secretary



Troy R. Via
Vice President &
Chief Operating
Officer
Assistant Secretary

OPERATIONS REVIEW

Across 13 Nebraska counties, OPPD works every day to build a better future for our customers. We're always watching for future trends and challenges that could affect the industry and preparing for what's to come.

We're also charging forward with a strategic vision, Powering the Future to 2050, to offer our customers reliable, affordable and environmentally sensitive energy in a rapidly changing world.

The six pillars of this vision are Perfect Power, Customer Freedom, Cleaner World, Digitally Driven, Purpose-Driven Culture and Future-Ready Posture.

Perfect Power is OPPD's vision to create a reliable, resilient and secure system that enables two-way communication with customers and intelligent solutions for their energy needs.

Customer Freedom focuses on ways to give customers more choice, customization and convenience.

Cleaner World emphasizes the importance of environmental sensitivity in our core operations and giving our customers the opportunity to meet their environmental goals.

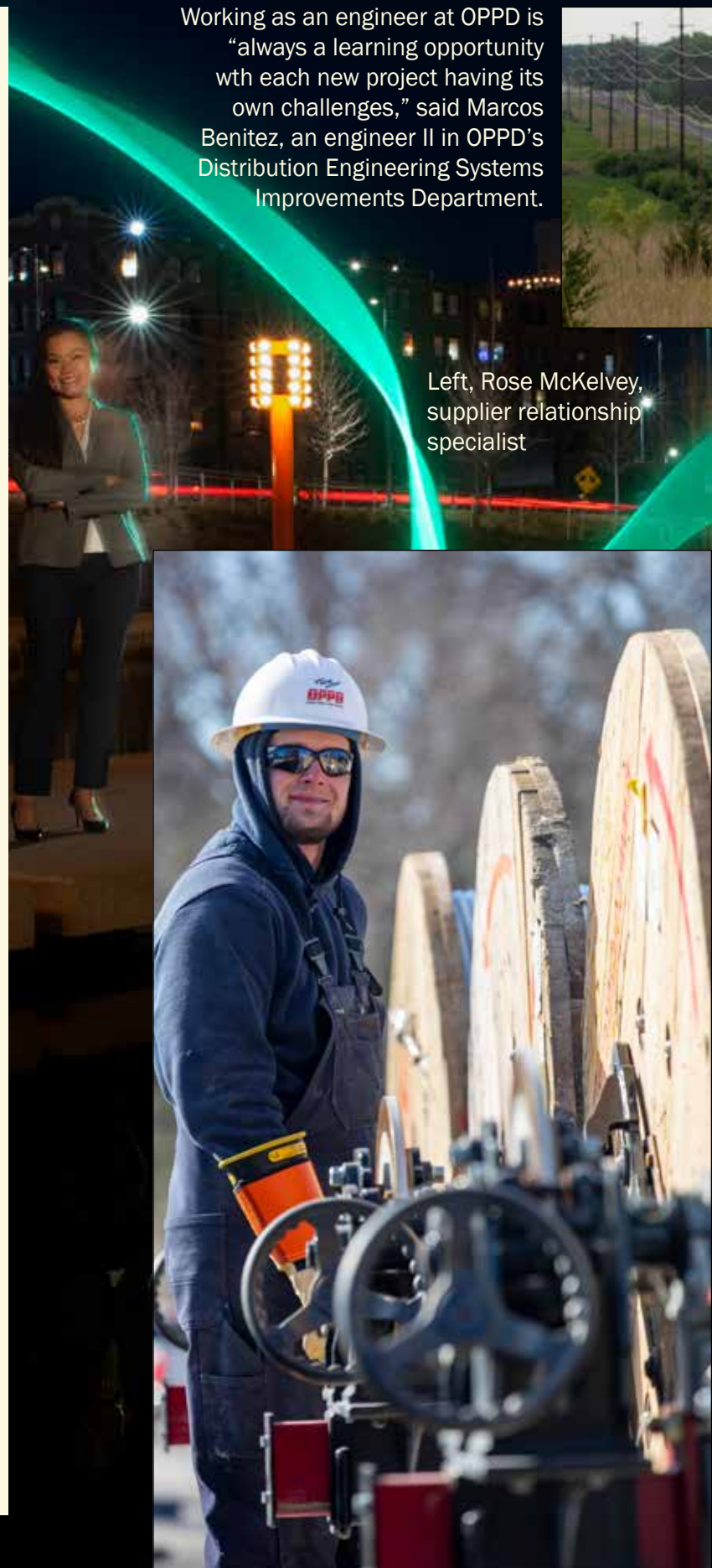
Digitally Driven calls on OPPD to expand on its current efforts to create a secure, resilient and digitized experience for customer-owners, employees and partners.

Purpose-Driven Culture seeks to cultivate leadership skills among all OPPD employees and create a people-first environment.

Future-Ready Posture encourages employees to think creatively and identify new opportunities to serve our customer-owners.

Working as an engineer at OPPD is "always a learning opportunity with each new project having its own challenges," said Marcos Benitez, an engineer II in OPPD's Distribution Engineering Systems Improvements Department.

Left, Rose McKelvey, supplier relationship specialist





CHARGING FORWARD

CORE WORK

Our main mission, as always, is to provide reliable, affordable and environmentally sensitive energy services. That sets the foundation that lets us focus on our priority work.

We're always mindful that everything we do affects customers in some way, whether it's answering a call in our contact center or fixing and upgrading equipment at one of our plants. With every town hall in a neighborhood or community, every parade and every community gathering, we work to build customer relationships.

Within our Powering the Future to 2050 vision are enterprise-level priorities to ensure we're doing the right work at the right time. All the work happening today will get us to our future vision – and some of those pieces like Turtle Creek Station and Standing Bear Lake Station will be completed later in 2024.



Left, Tyler Jensen, apprentice line technician, operates a braking mechanism on a trailer loaded with spools of conductor as it pulls power lines through new distribution structures.



Turtle Creek Station, above, in Sarpy County, and Standing Bear Lake Station, left, in northwest Omaha, are scheduled to come online in 2024. Both are natural gas balancing stations.

Turtle Creek will produce about 450 MW of electricity, while Standing Bear Lake will produce about 150 MW.

CHARGING FORWARD INNOVATION

As times and technologies change, so does OPPD. In the never-ending quest to strengthen and modernize our grid, we're pursuing new solutions to help us respond more quickly and more efficiently to outages.

One innovation is Advanced Metering Infrastructure (AMI), a two-way communication path between OPPD and our customers that will alert us automatically when a customer loses power. The transition will take place gradually, over five or six years.

Another future upgrade is a self-healing grid with sensors, controls and communication devices to anticipate and detect problems earlier. This technology will help us minimize and possibly avoid outages.



Charles Hill,
troubleshooter

Jennifer McGee, field supervisor, left, with Eli Scheissler, distribution services manager, work with crews during a planned outage at Sarpy County Station.



Aaron Prohaska, line technician, and Ben Dolezal, apprentice line technician, work on bringing power to a mixed-use development in Omaha.

Ryan Campbell, apprentice machinist, often travels to a variety of OPPD locations within the service territory to work on equipment. Power plant machinery demands near-perfect accuracy with very thin clearances, so precision is extremely important to machinists. One measuring tool Campbell uses measures in 0.0005-inch.



Jake Anderson, distribution system operator (DSO), works the desk at OPPD's Energy Control Center. DSOs oversee the distribution system in the service territory to ensure that crews in the field can perform their work safely and that outages affect customers as little as possible.



Gary Wohlman, line maintenance technician, uses a drone during an inspection in a rural area north of Omaha.


CHARGING FORWARD PARTNERSHIPS

At OPPD, we're more than your local public utility. We're your energy partner. We're your friends, your neighbors, your family. We live with our customers in the communities OPPD serves and want to see those communities thrive.

That's why we've engaged in numerous partnerships. One venture in 2023 was the Kiewit Luminarium, a venue on the Missouri River with more than 100 interactive science exhibits geared toward people from all walks of life. OPPD is powering those exhibits with energy from a rooftop solar panel that is pulling double duty as an electrical source and an educational tool.

We've enjoyed a longtime partnership with Metropolitan Utilities District to raise money for utility customers who are going through hard financial times and struggling to pay their bills. The funds we raise provide assistance to customers living in all 13 Nebraska counties within our service territory.

We also work with homeowners, businesses and many others who want customized services, whether that's through customer-owned generation or money-saving energy-efficiency incentives.



OPPD sent a 16-person mutual aid team down to northern Florida for a nine-day stint to help restore power after Hurricane Idalia ravaged the area.

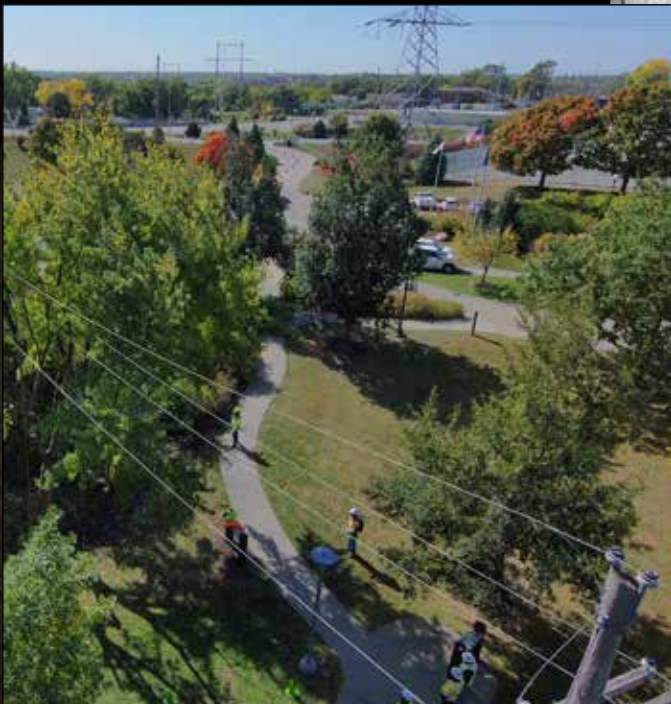




The Kiewit Luminarium is a science museum in downtown Omaha. The 82,000-square-foot museum features more than 100 interactive exhibits.



OPPD employees volunteer at the Food Bank for the Heartland.



An aerial view of OPPD's arboretum. The Arbor Day Foundation named OPPD a Tree Line USA Utility for the 23rd year. Tree Line USA is a partnership between the Arbor Day Foundation and the National Association of State Foresters that recognizes utilities that take proper steps to protect and cultivate America's urban tree canopy.